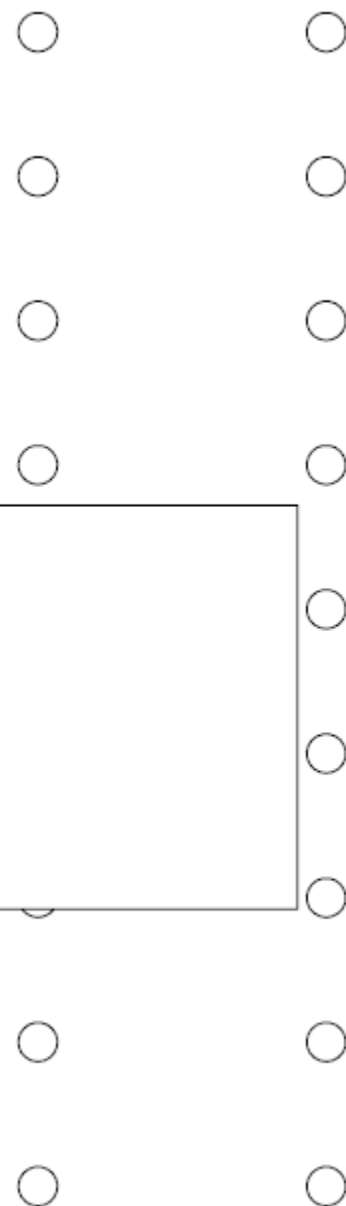
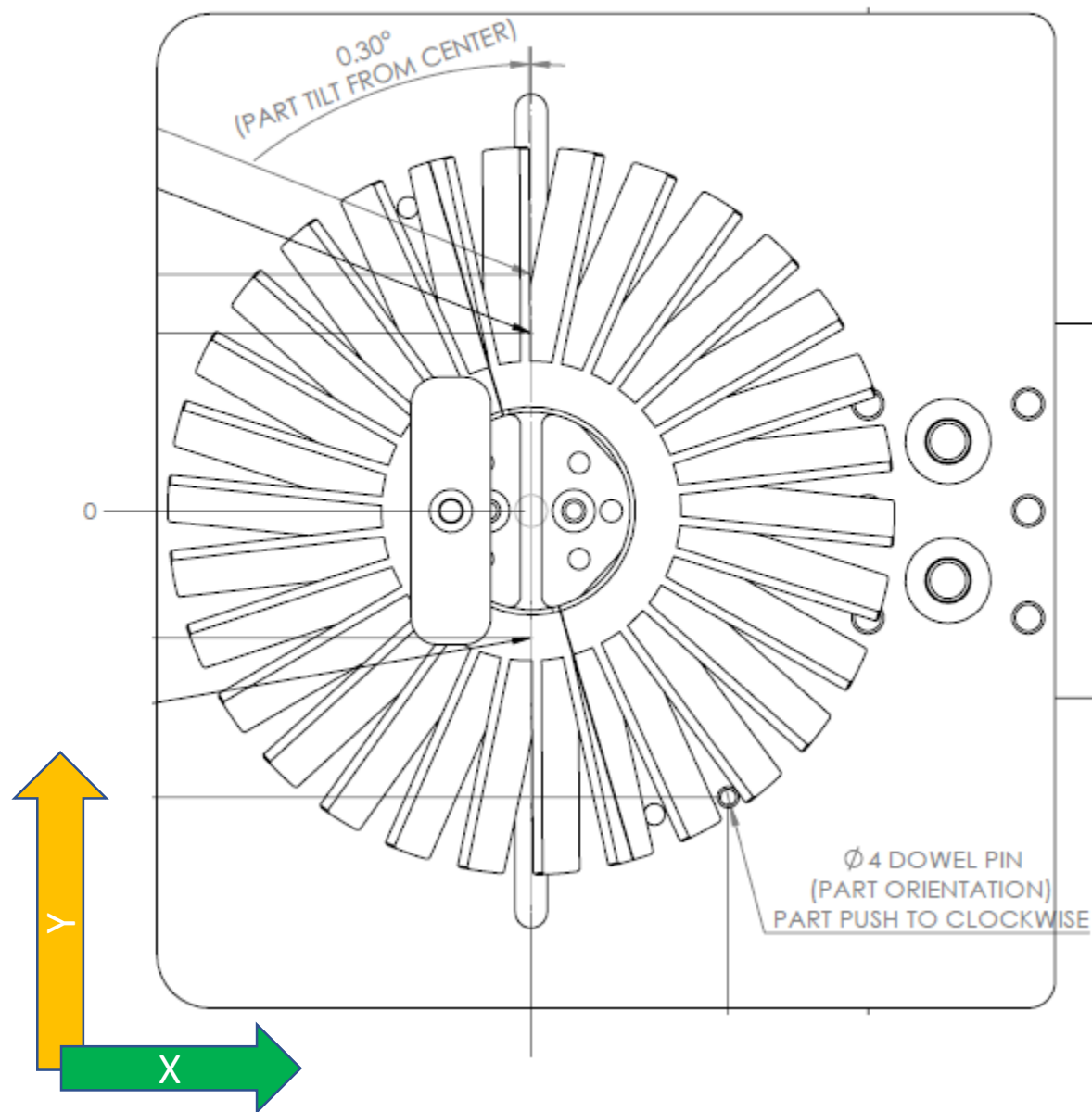
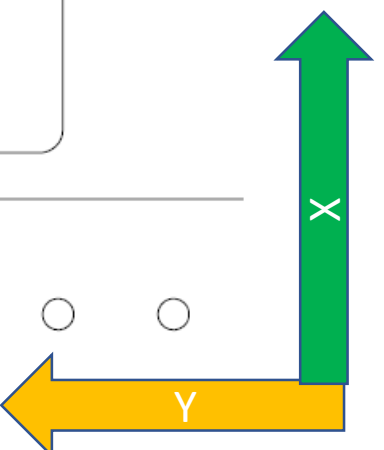
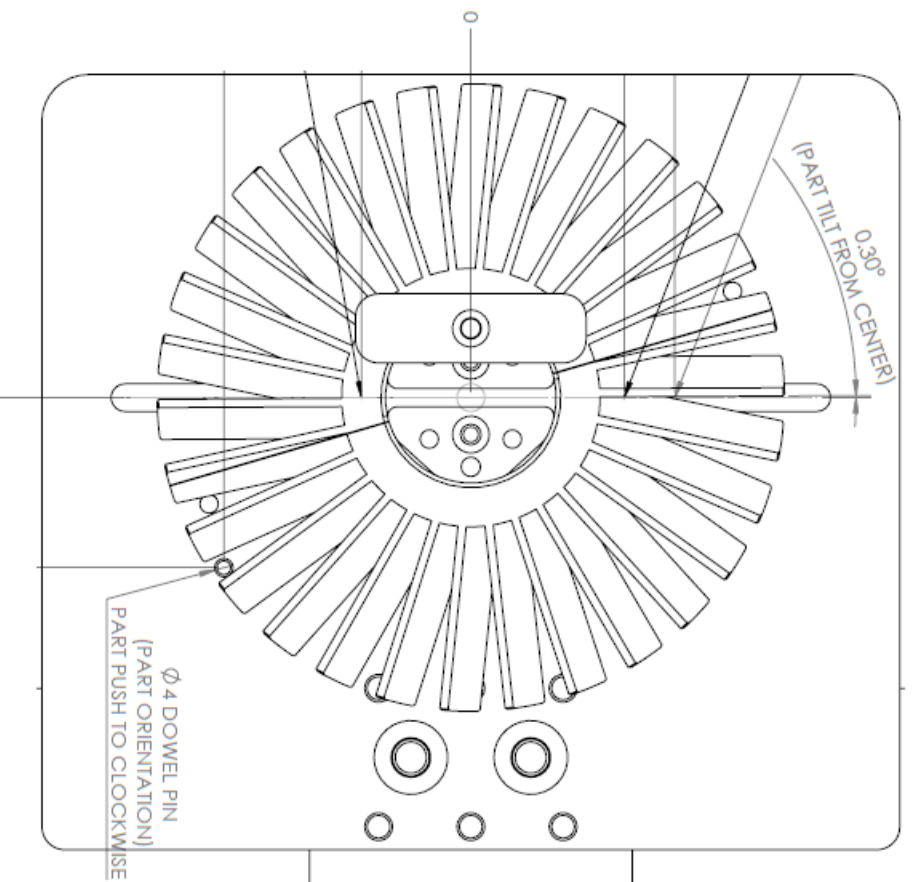


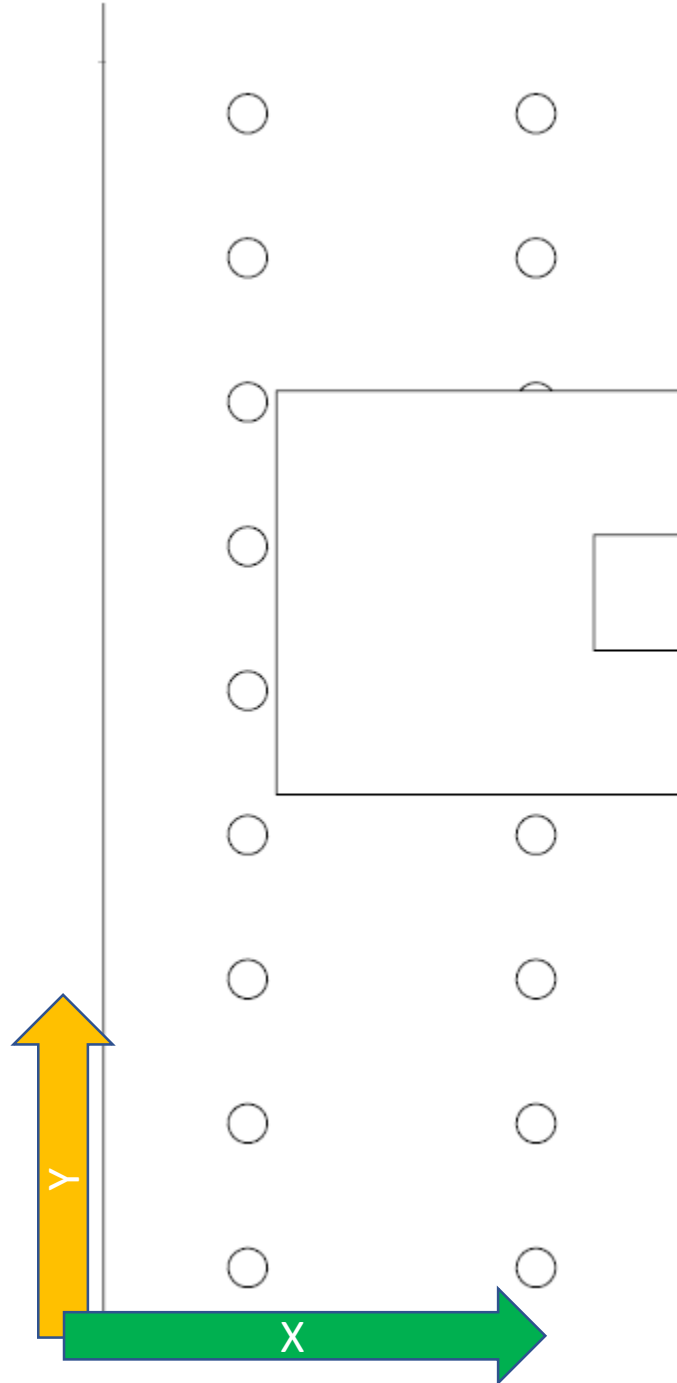
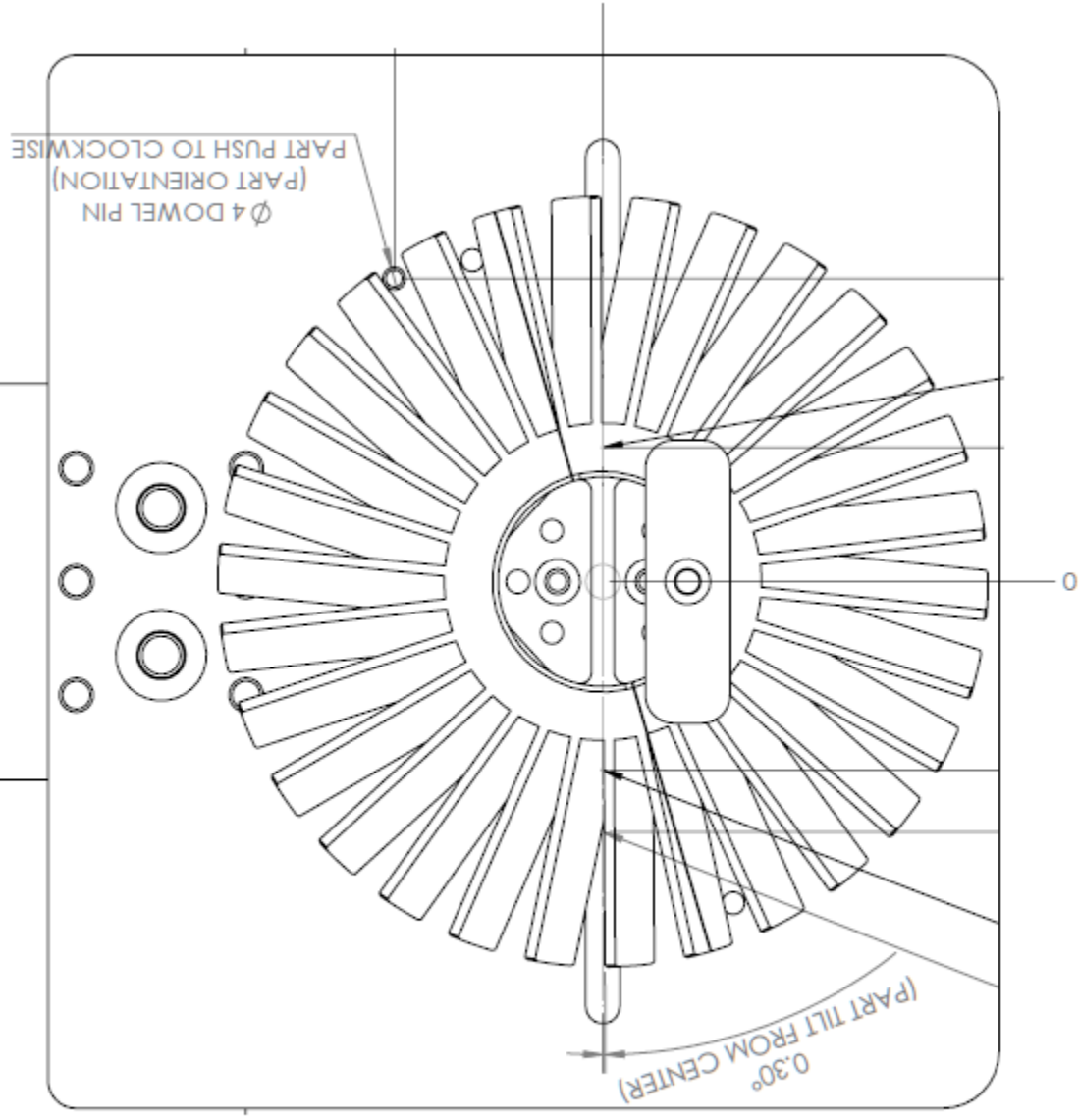
# WIRECUT SETTING CHECKING REFERENCE

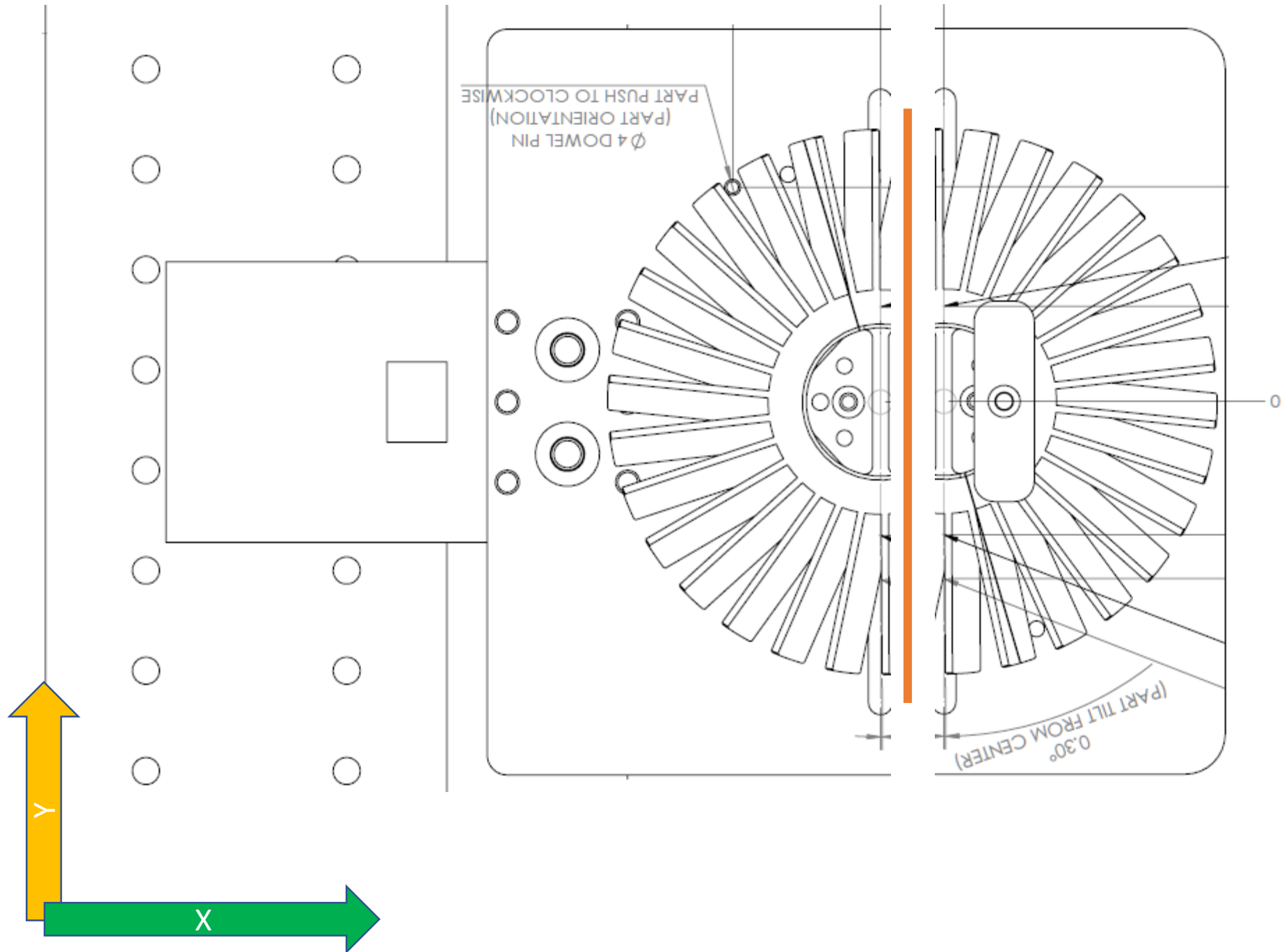


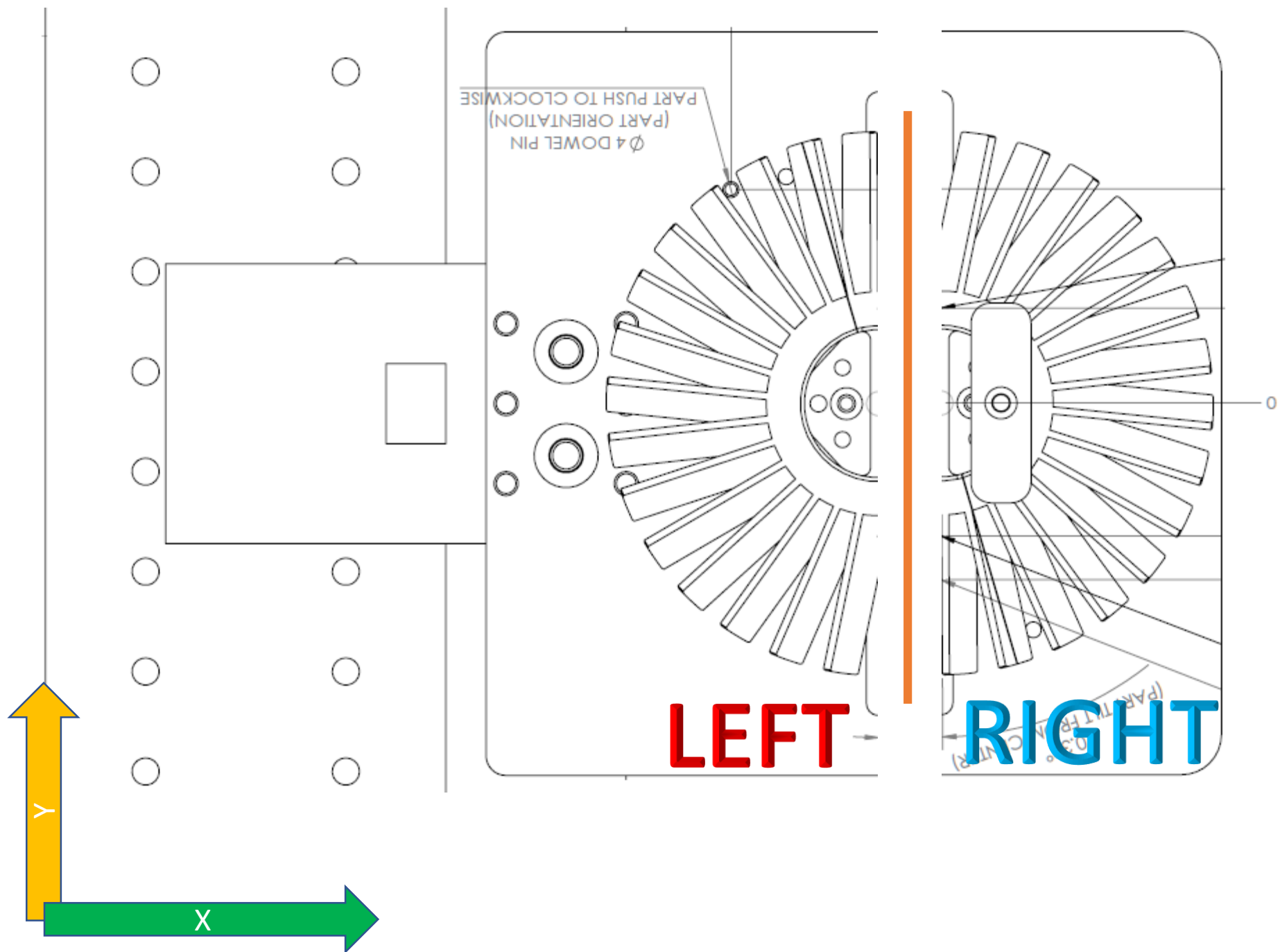
WIRECUT SETTING  
CHECKING REFERENCE

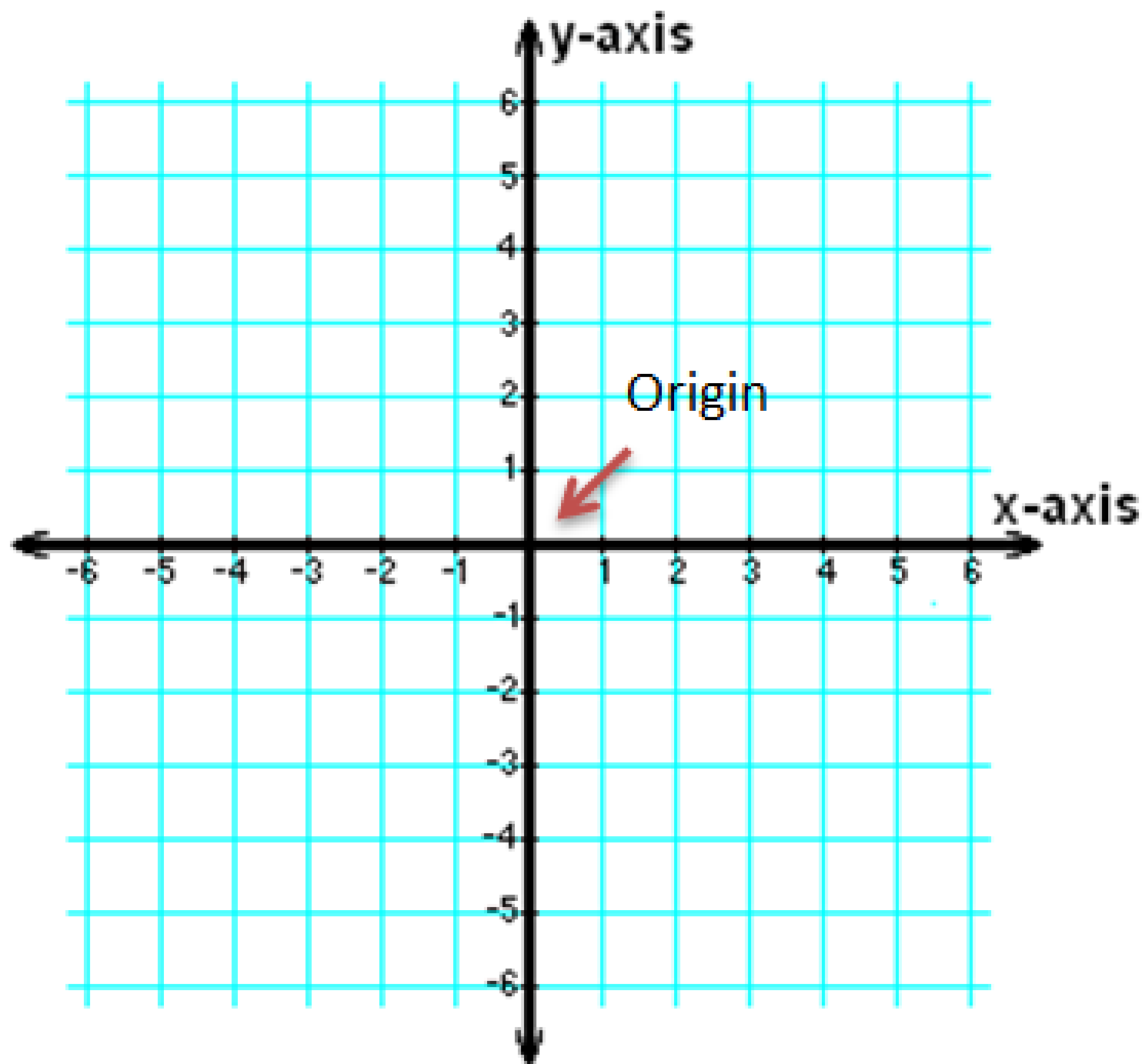


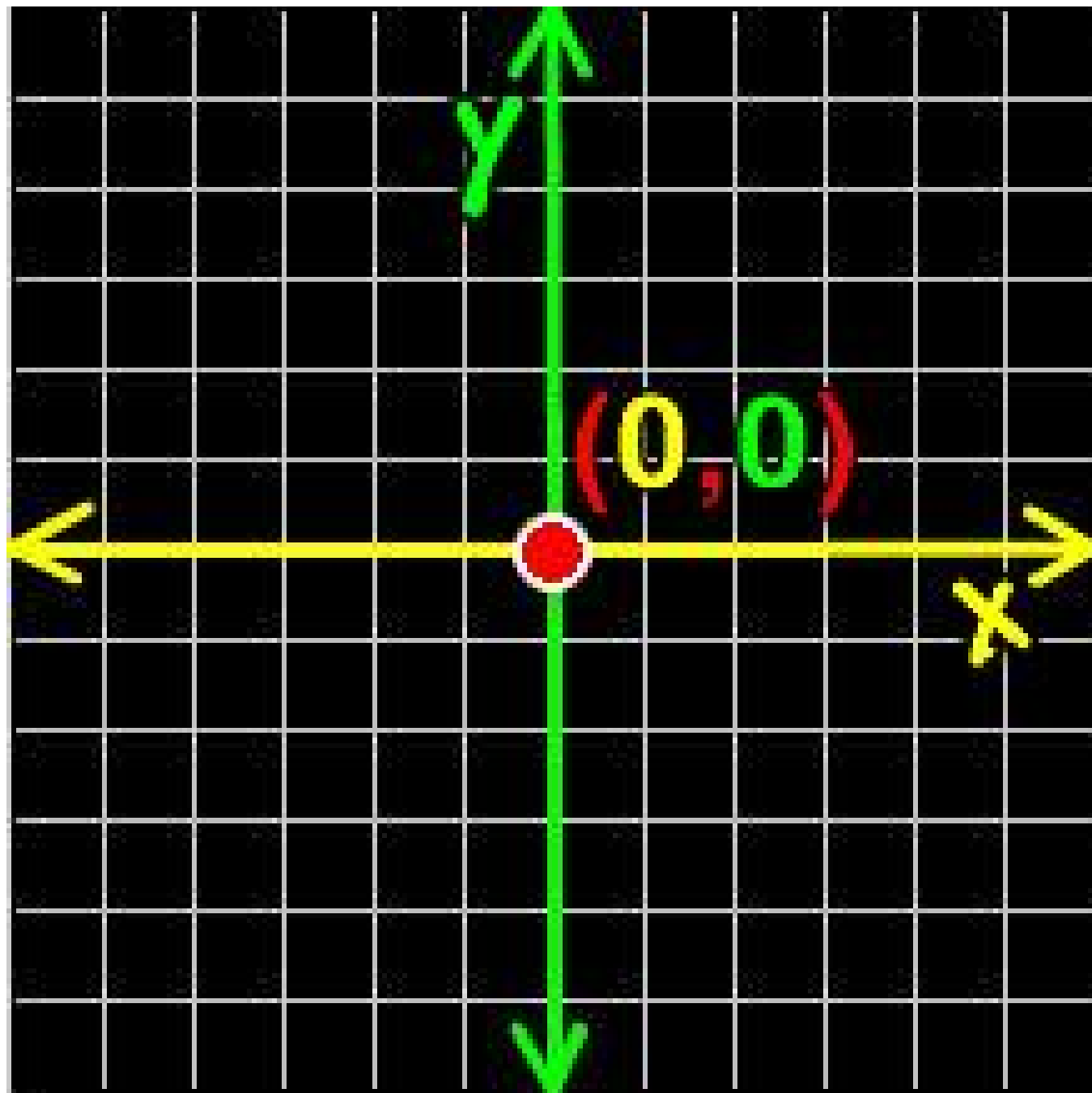
WIRECUT SETTING  
CHECKING REFERENCE

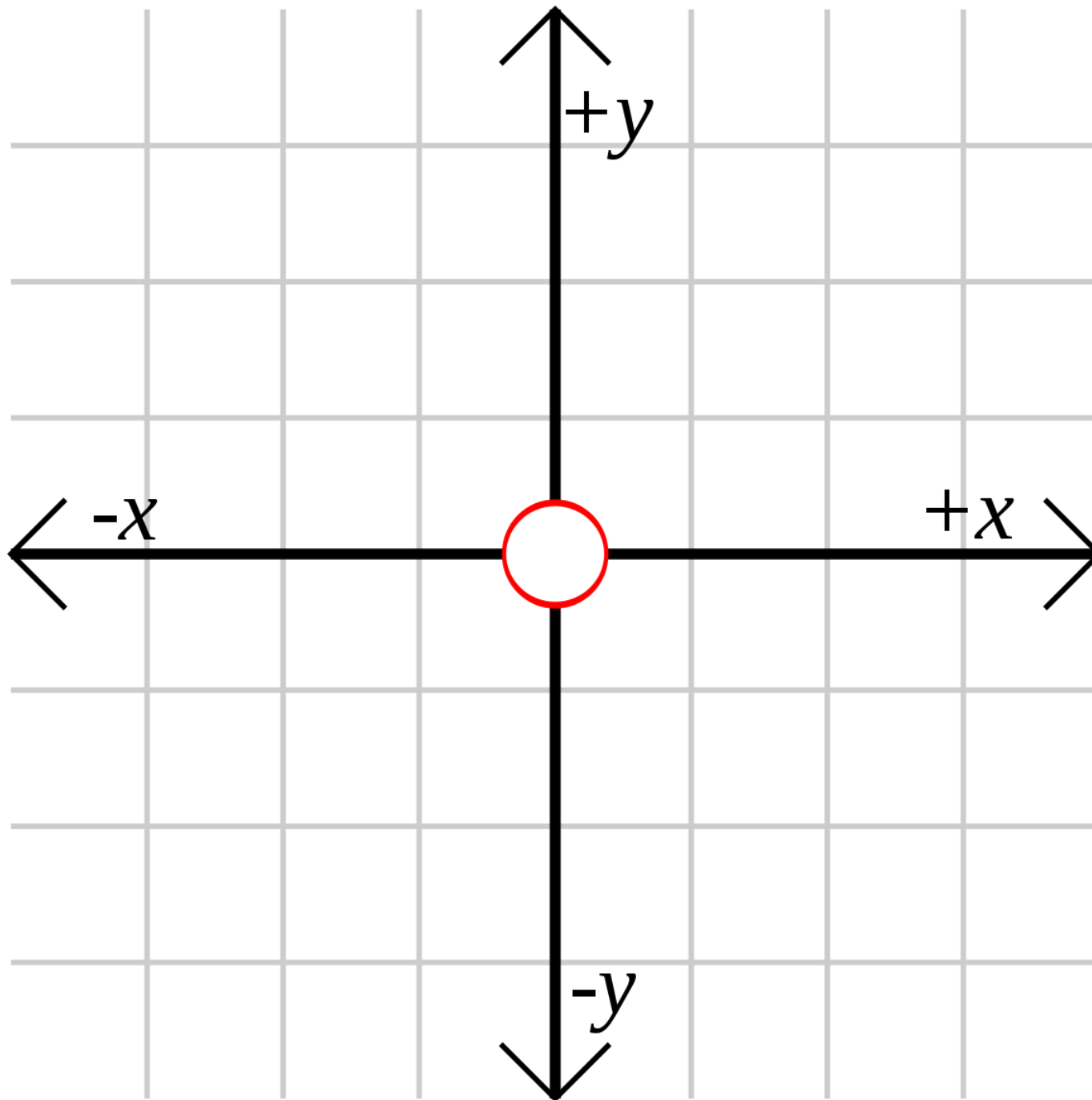




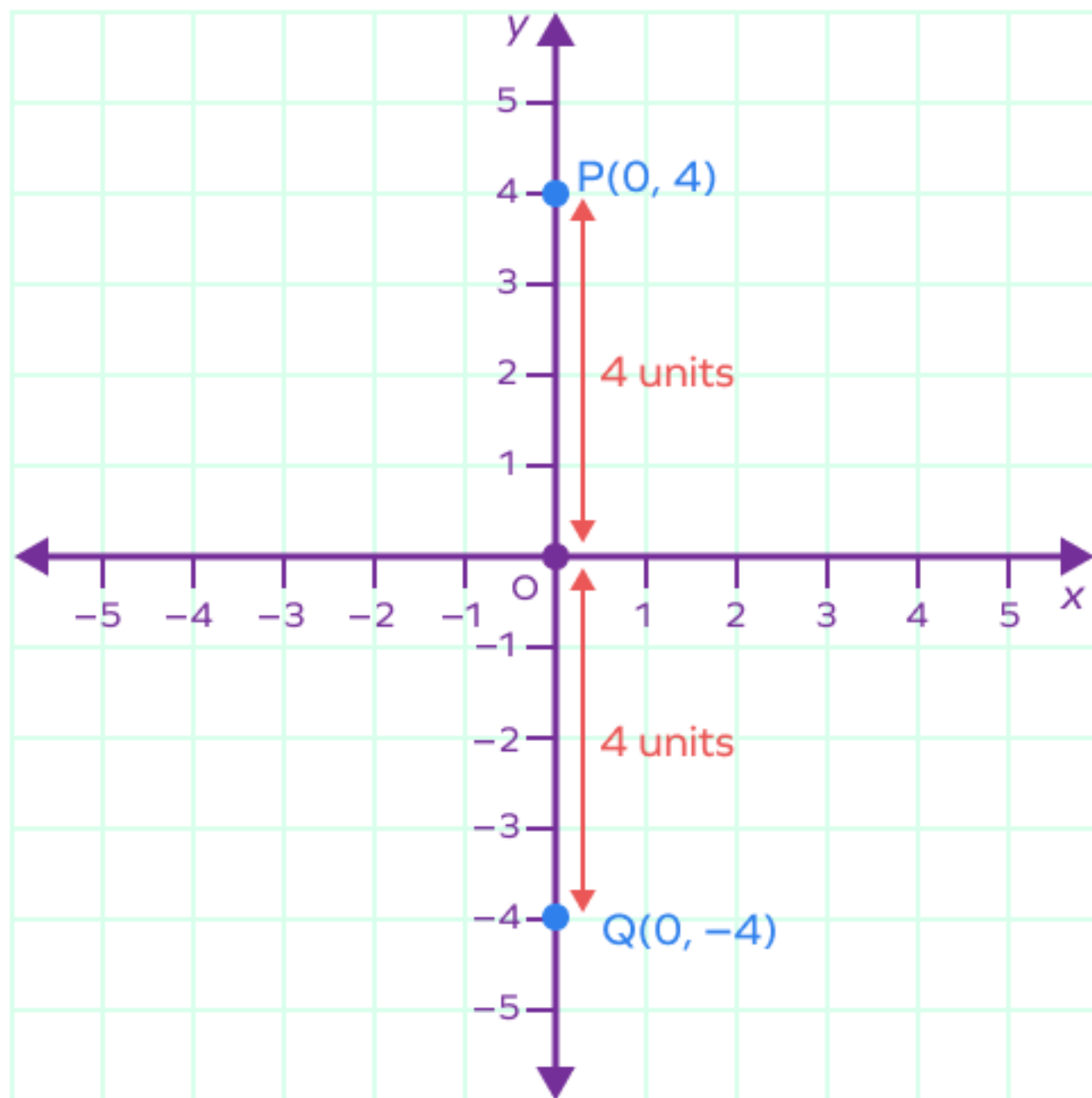








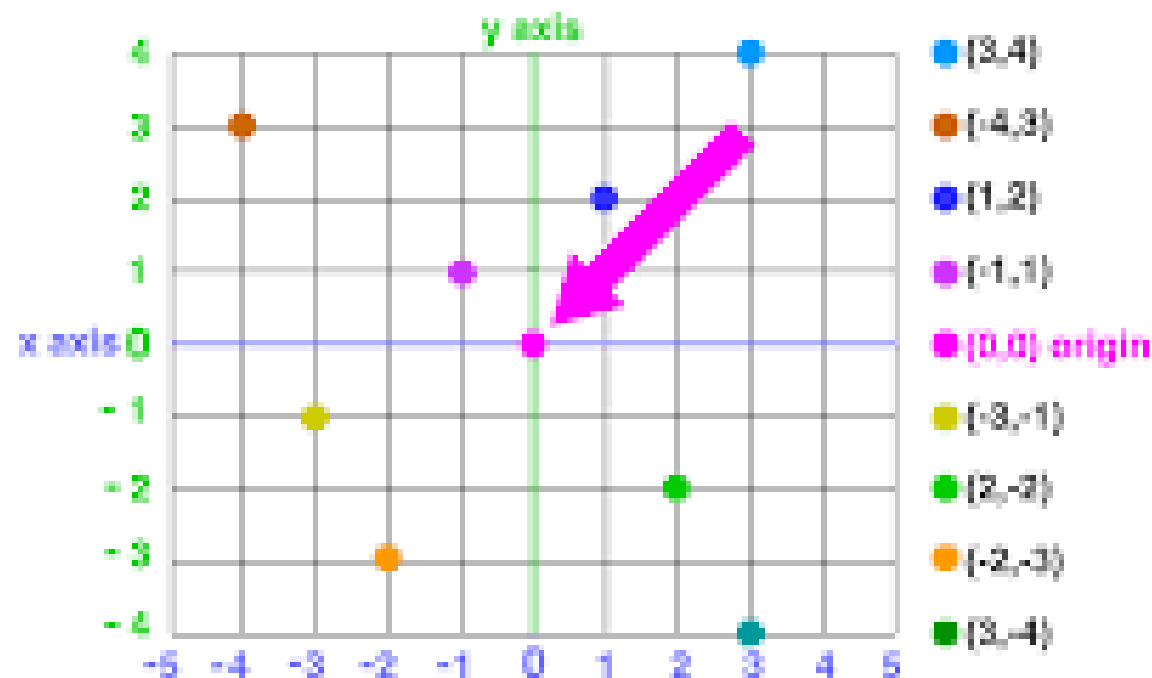


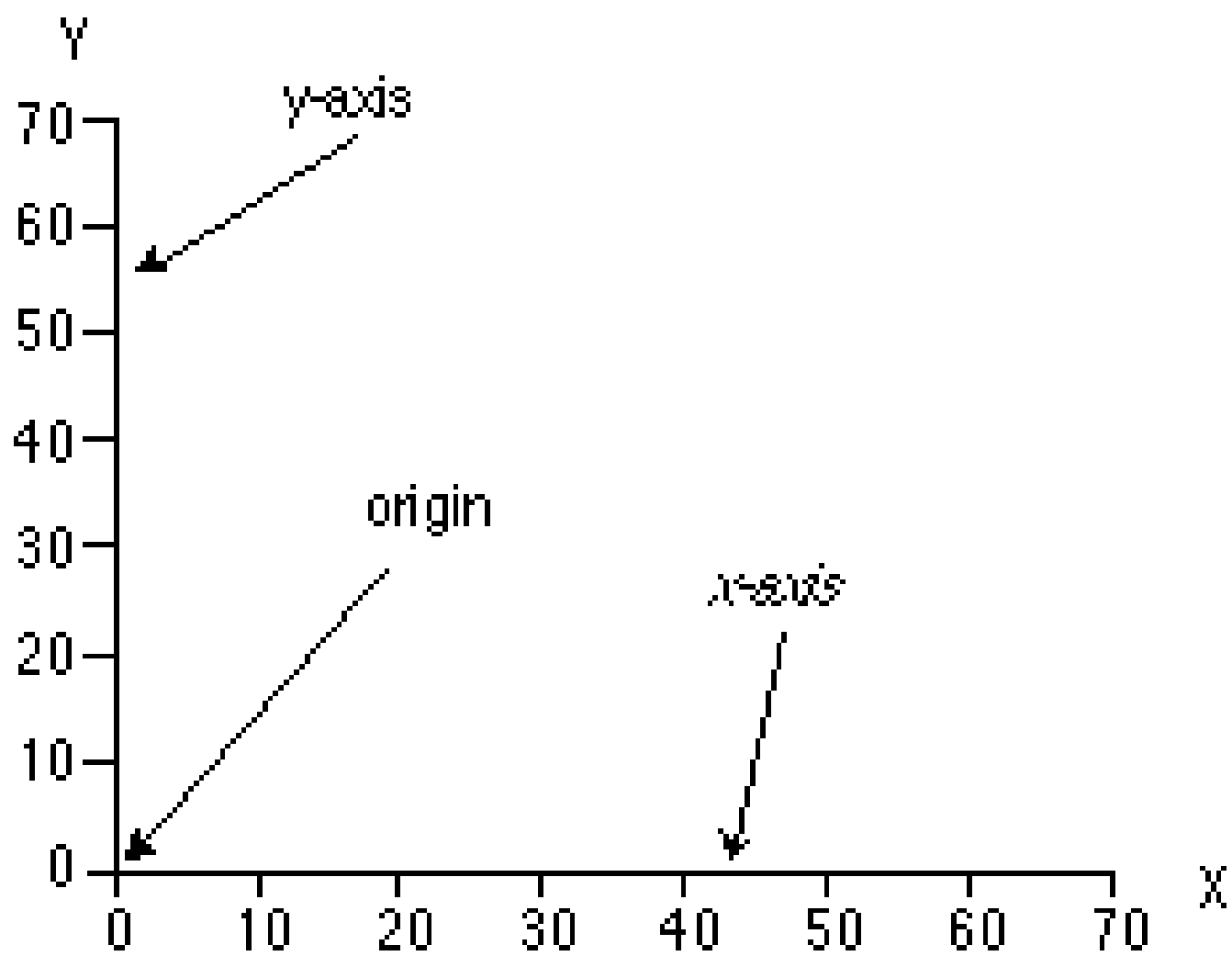


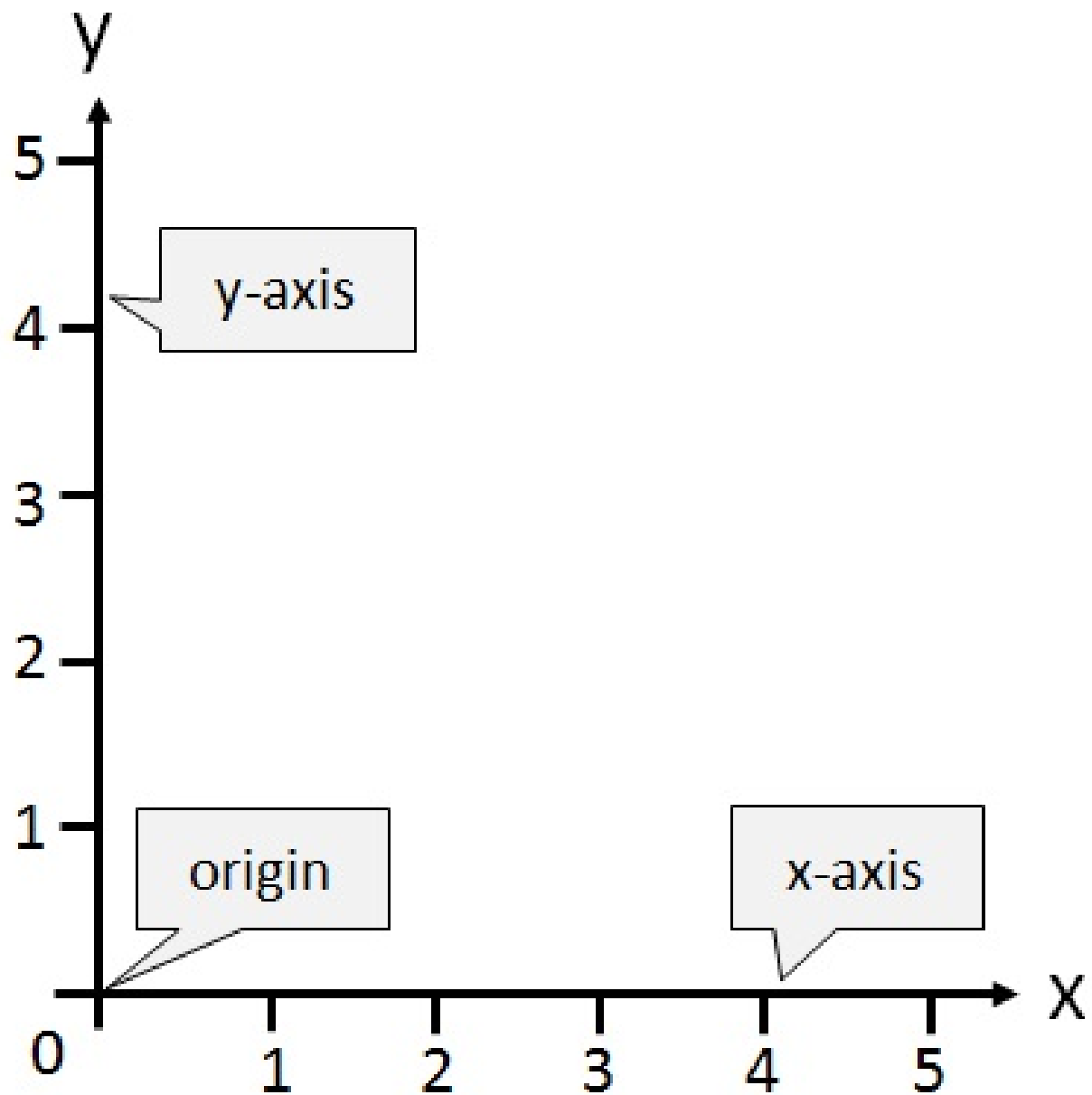
## origin

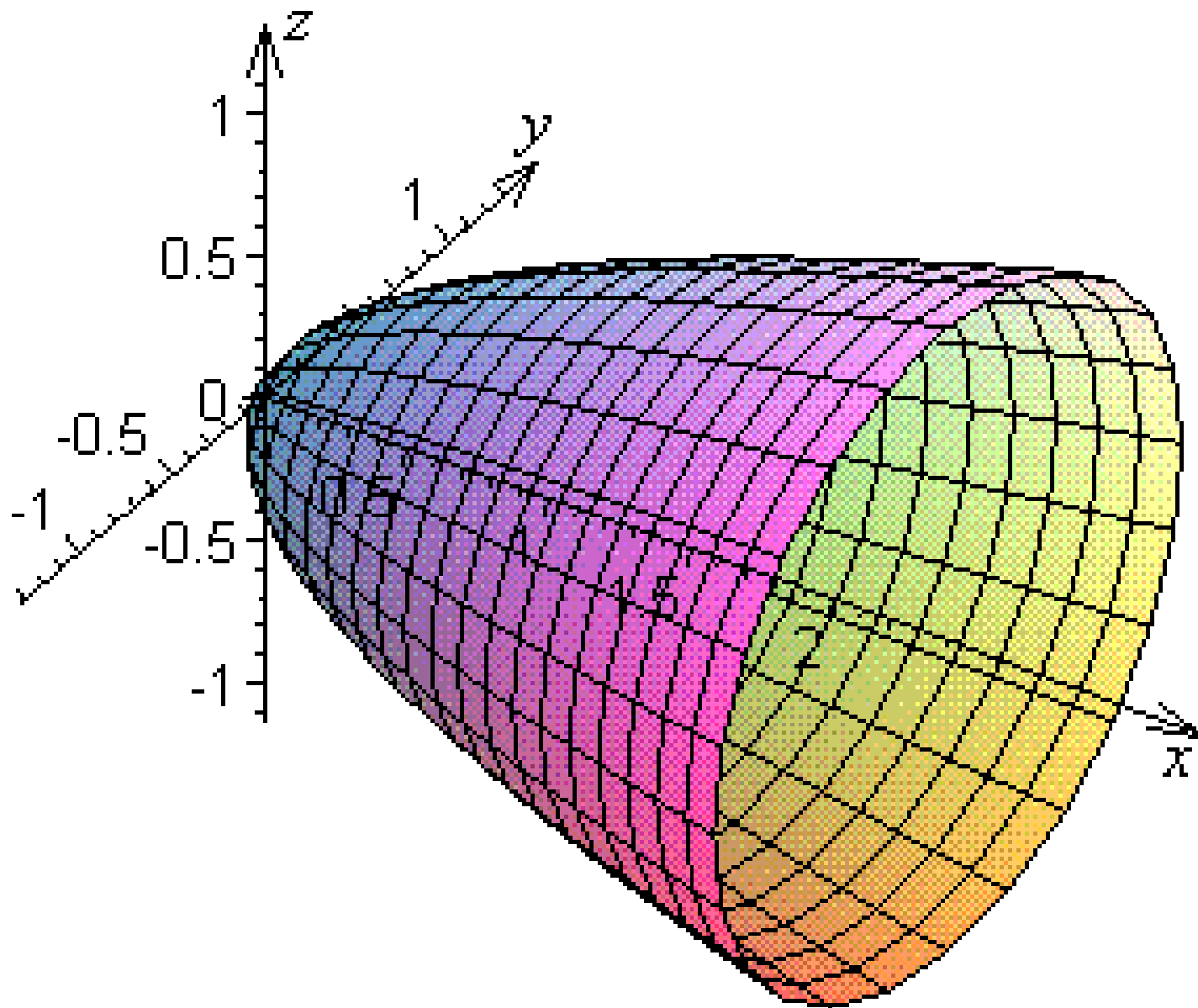
The origin is the point of intersection of the x and y axis on a coordinate or Cartesian plane.

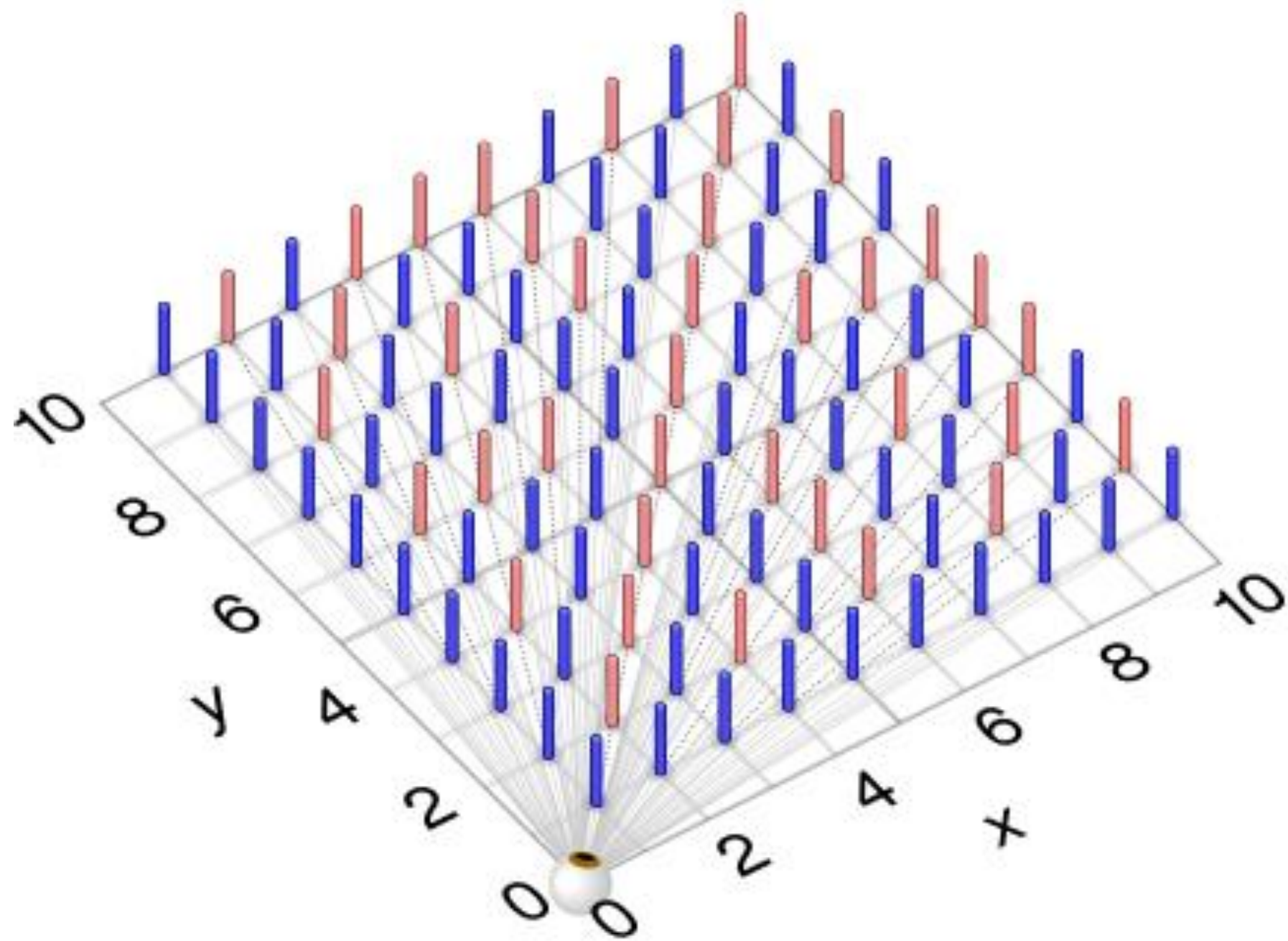
**(0,0)**

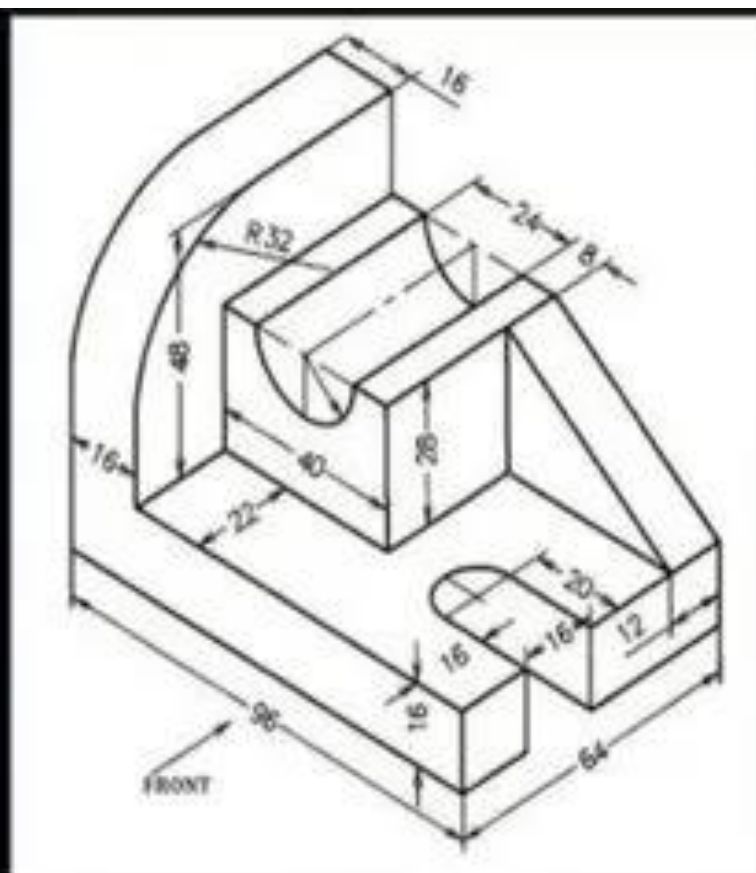
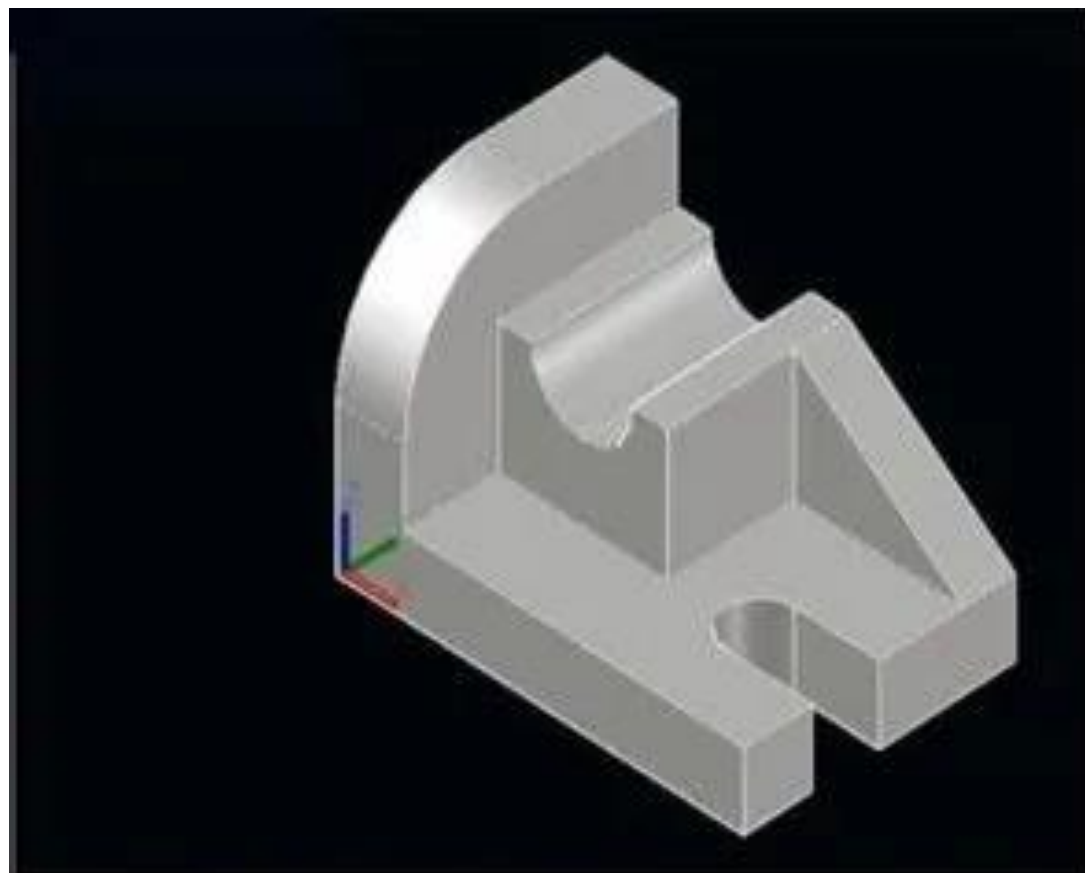




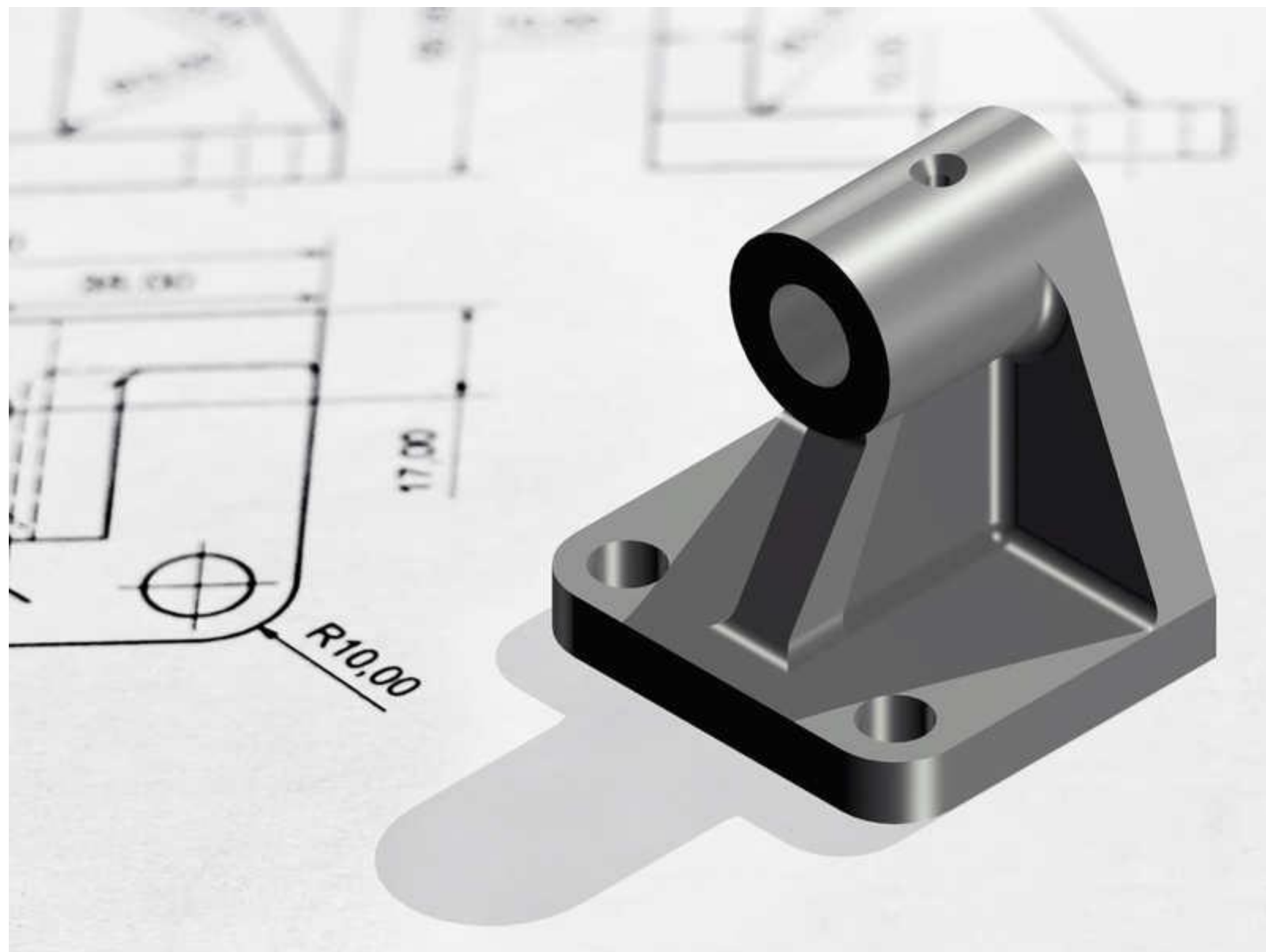




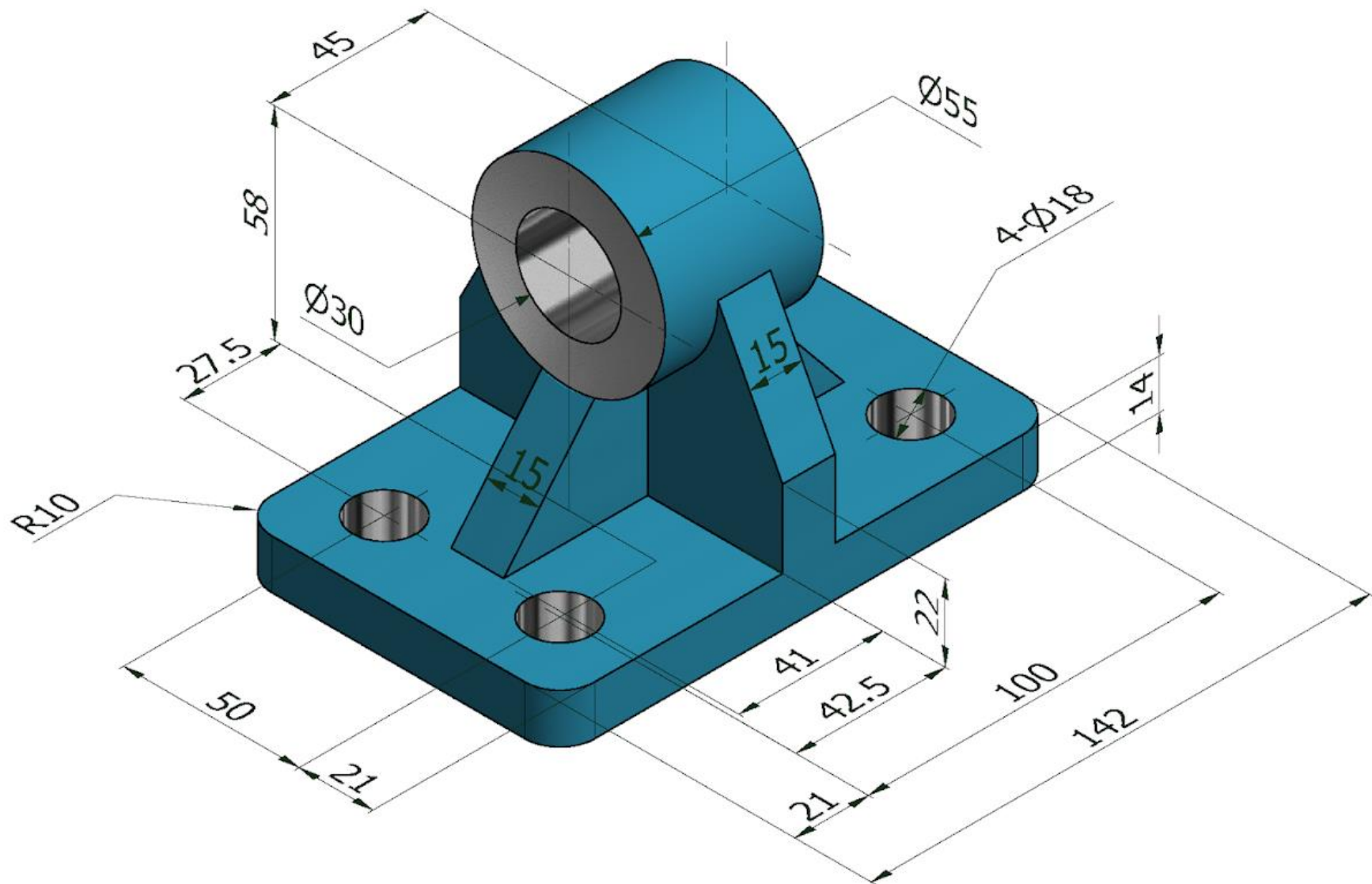


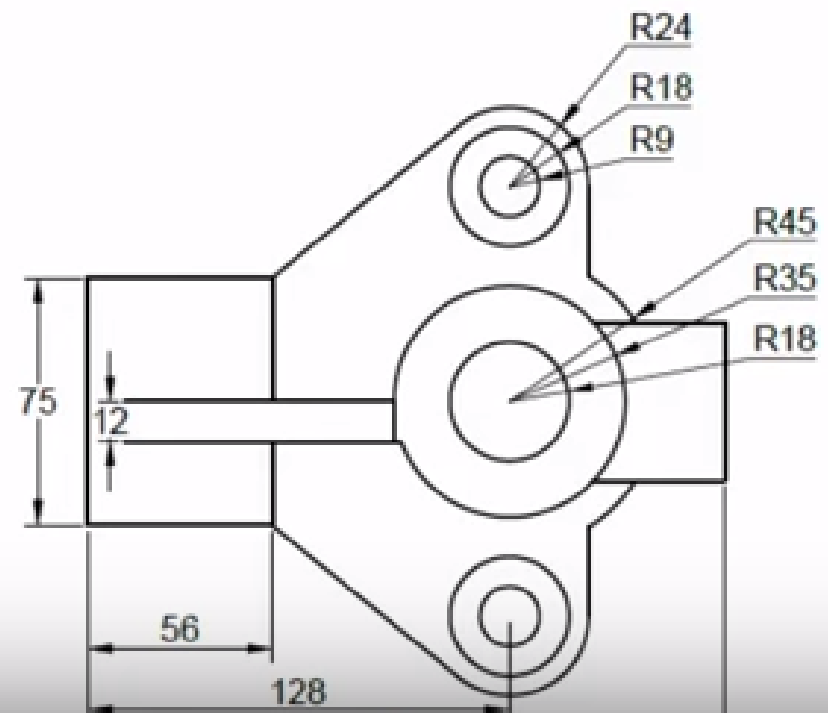
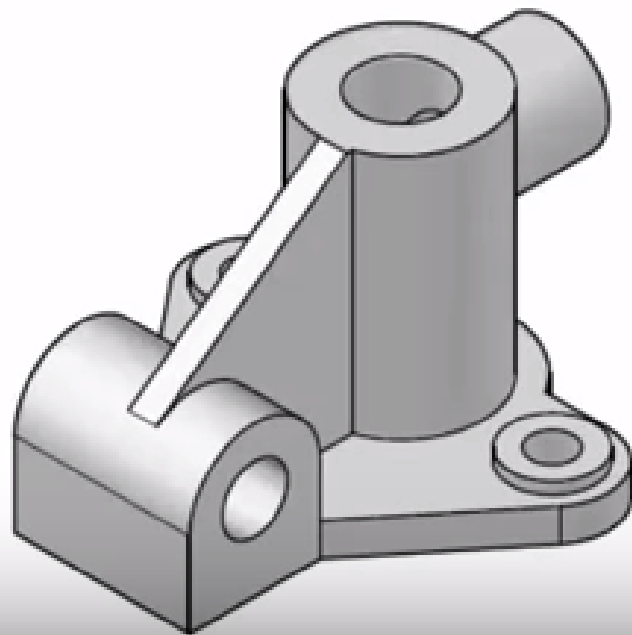
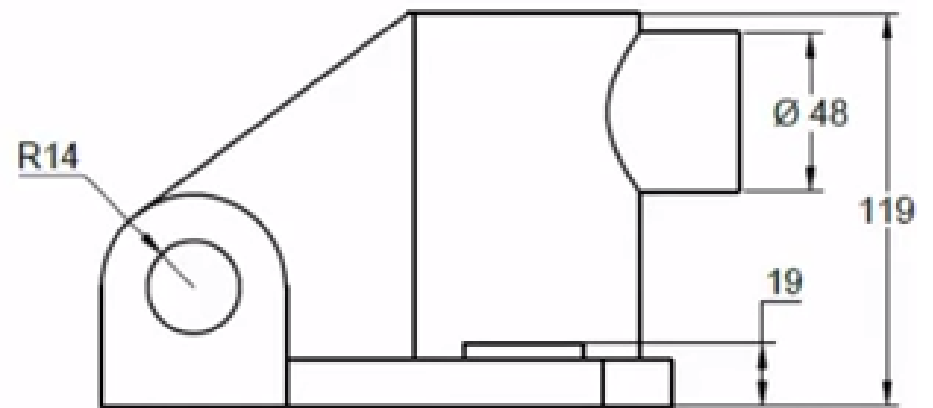
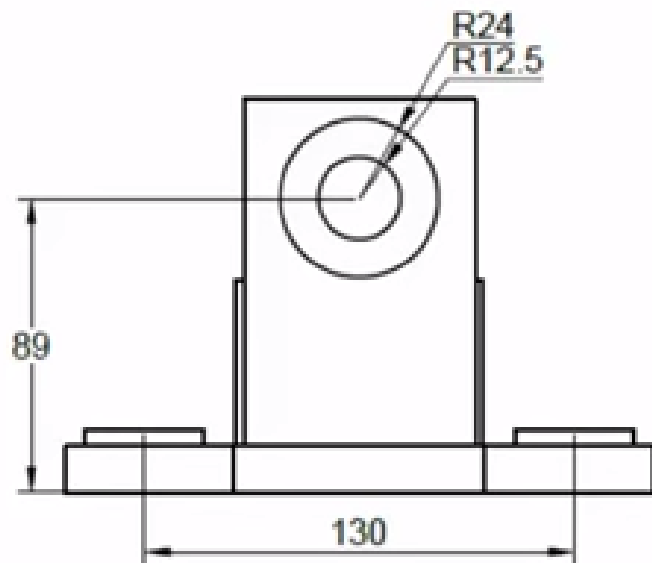


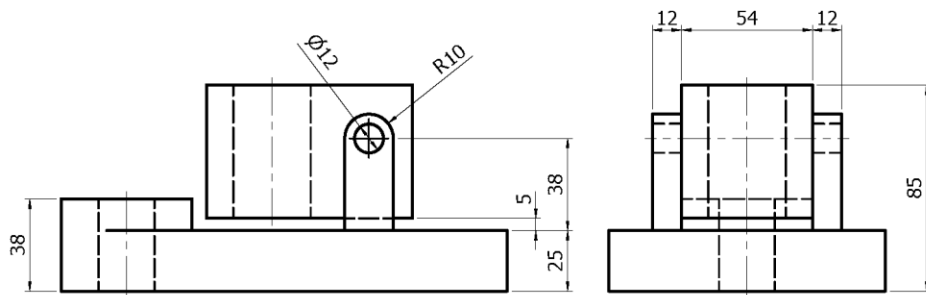
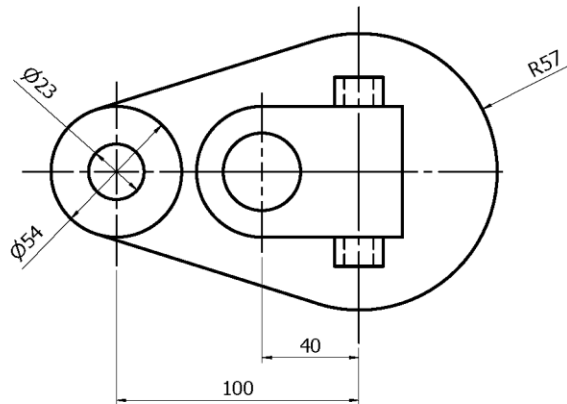
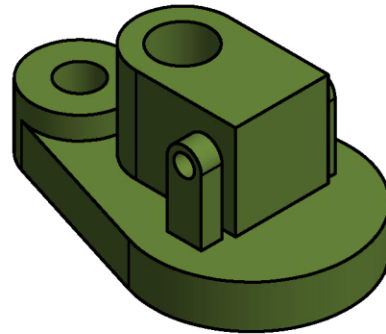
Generating Drawing Views of the 3D Models







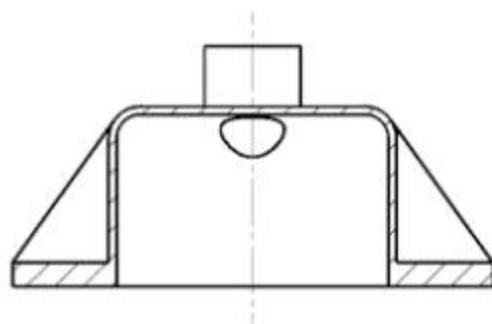
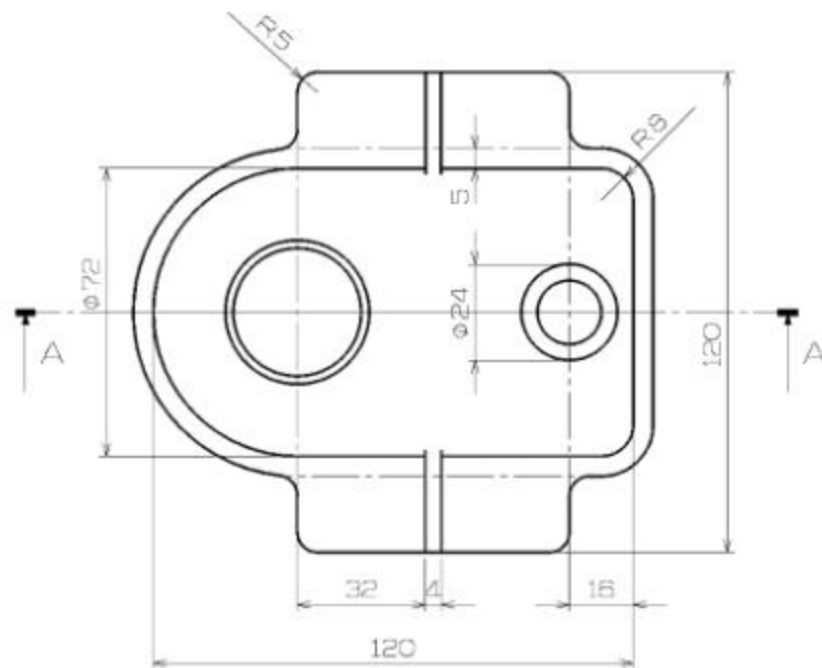
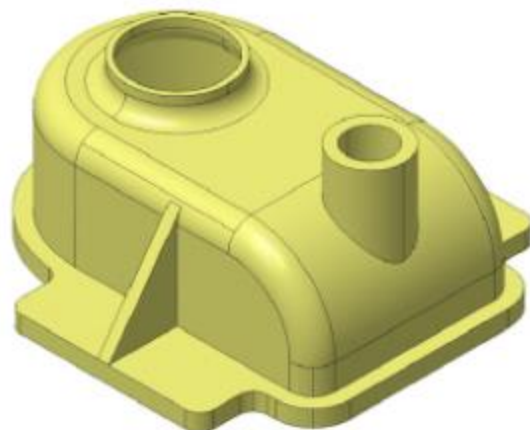




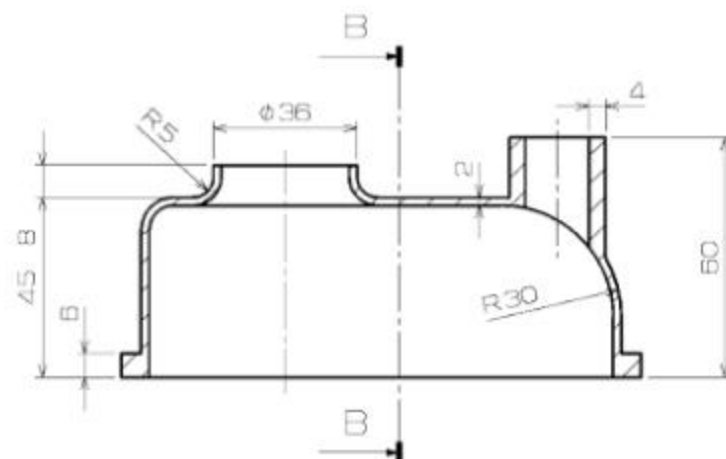
	Title	Date	Approve
	Modeling Practice Drawings 74	Design	
		Check	

3D EXERCISES

666



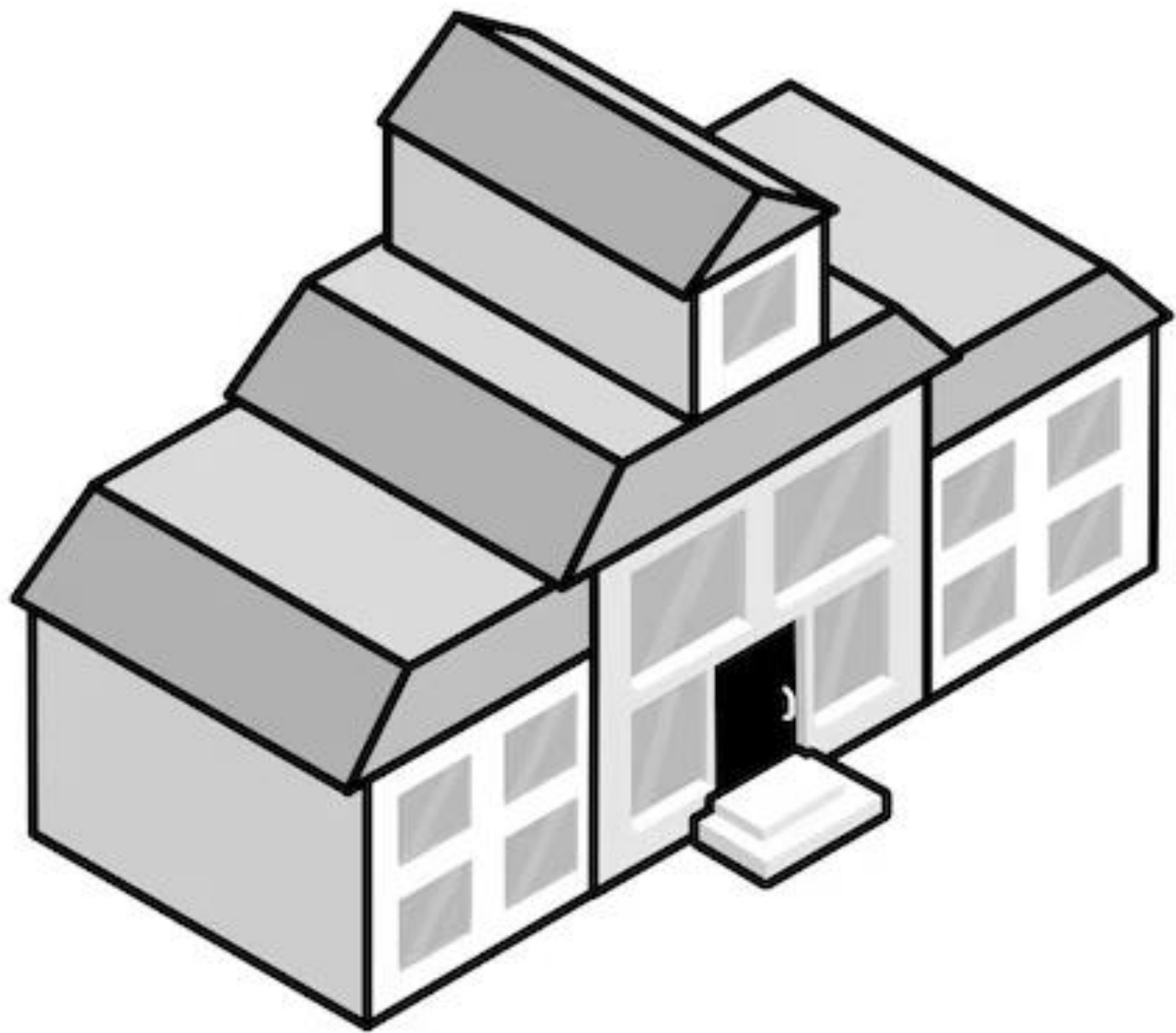
SECTION B-B

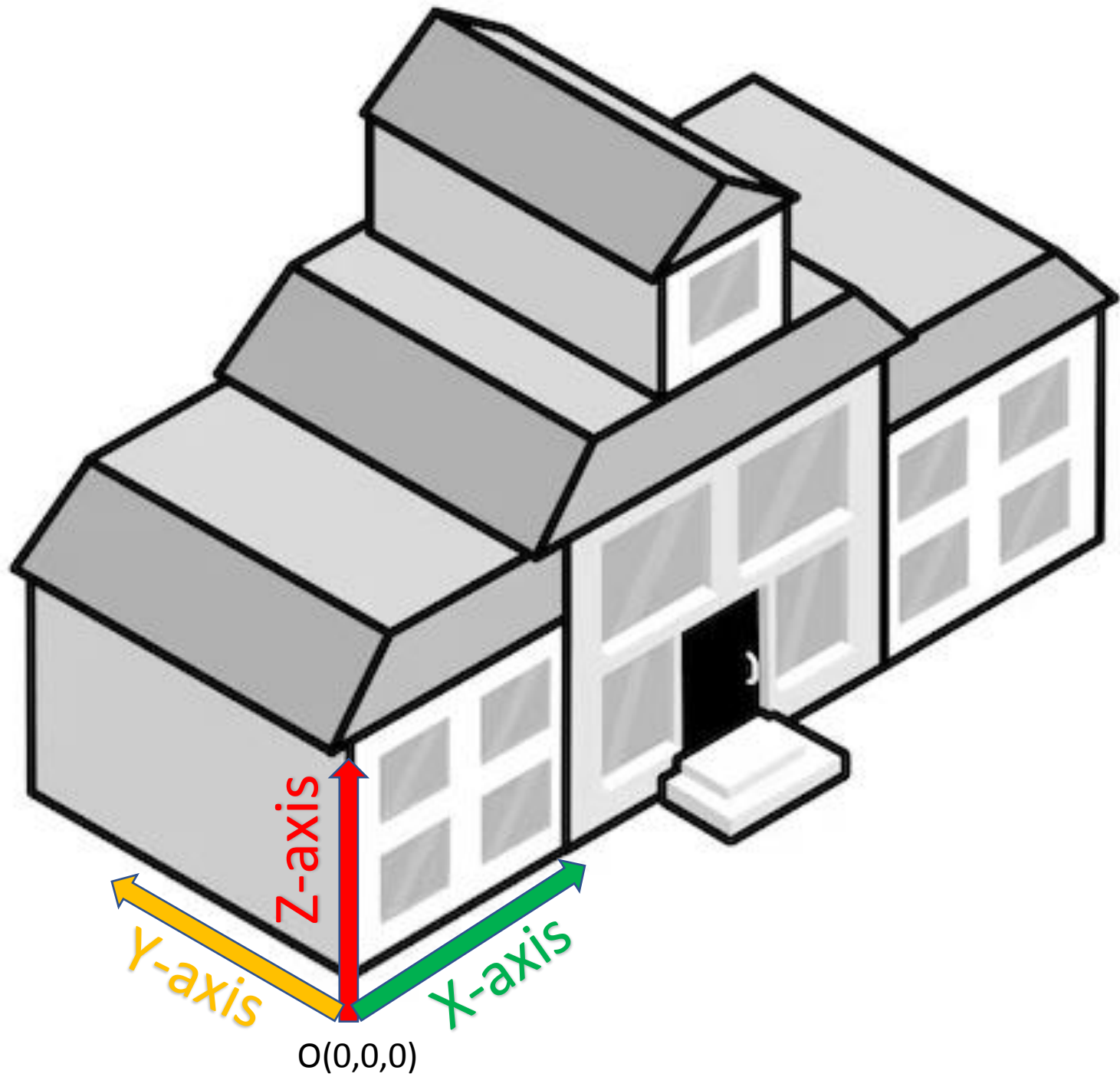


SECTION A-A

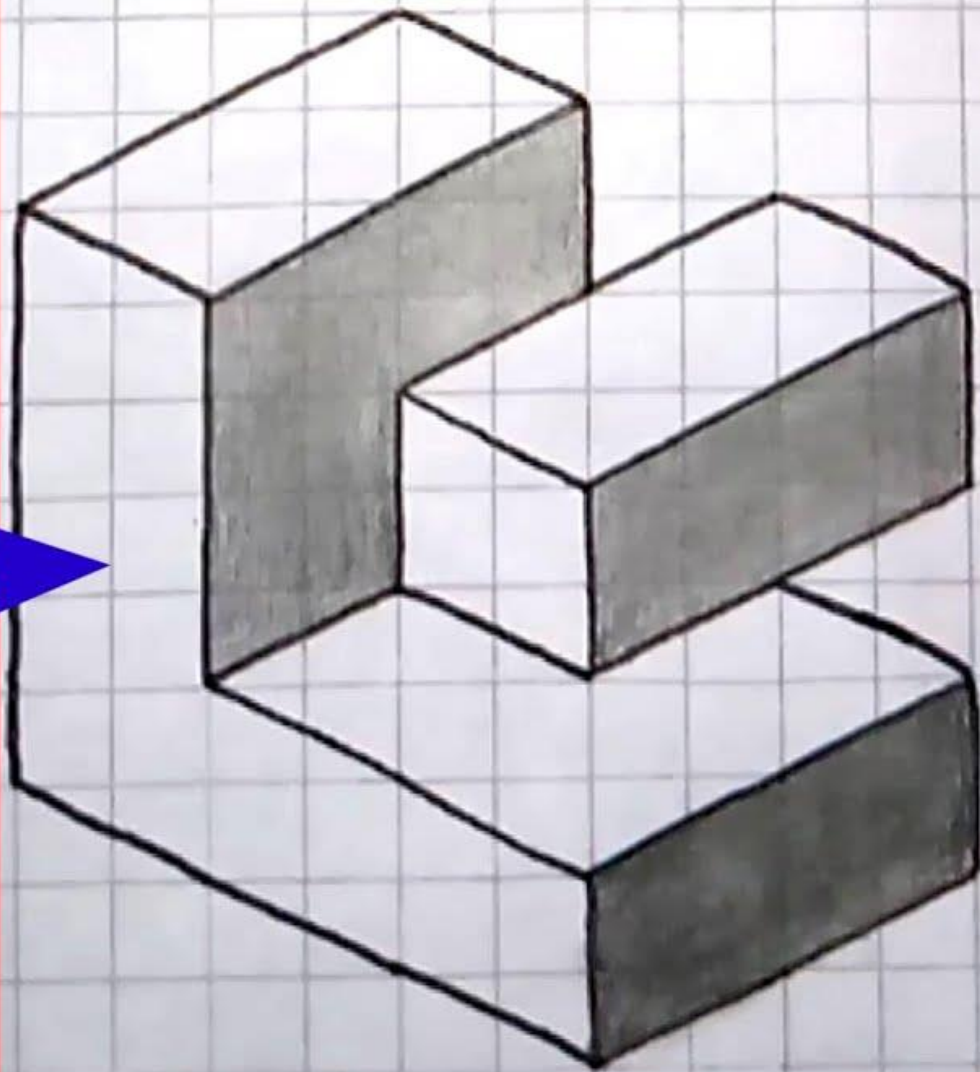
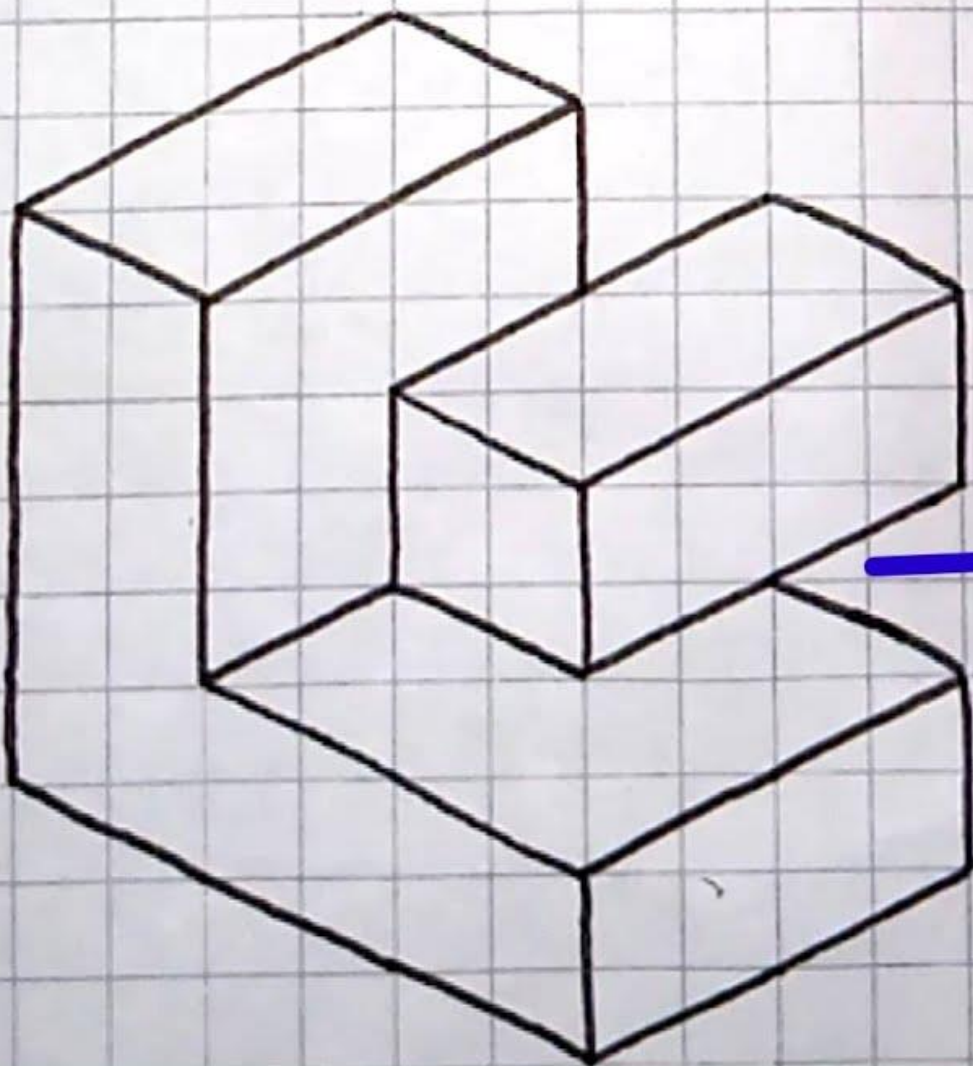


3D EZINPK











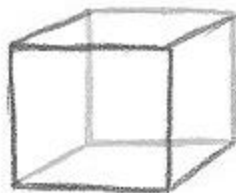
SHAPE #1



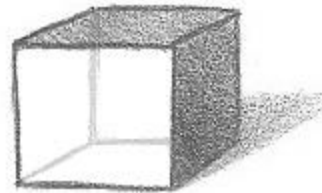
DUPLICATE



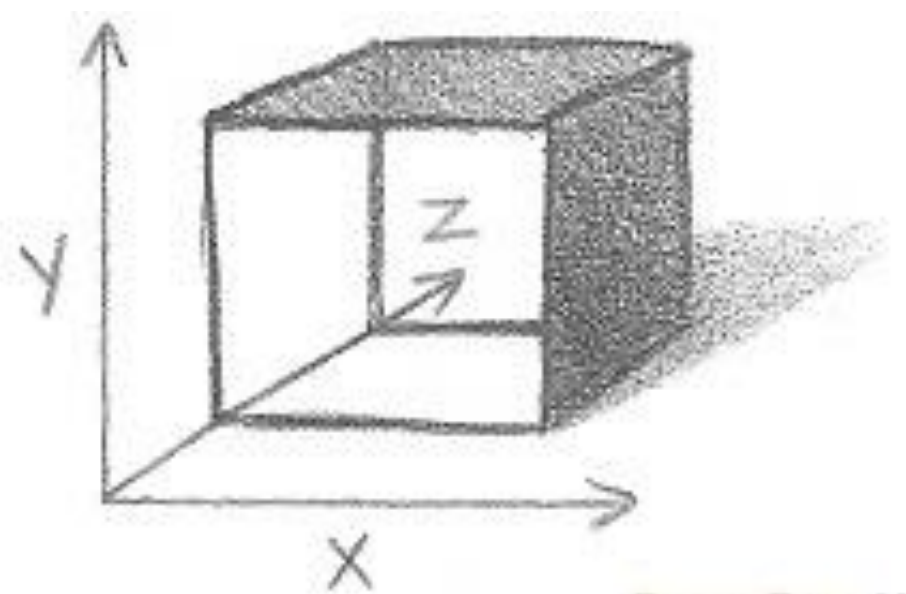
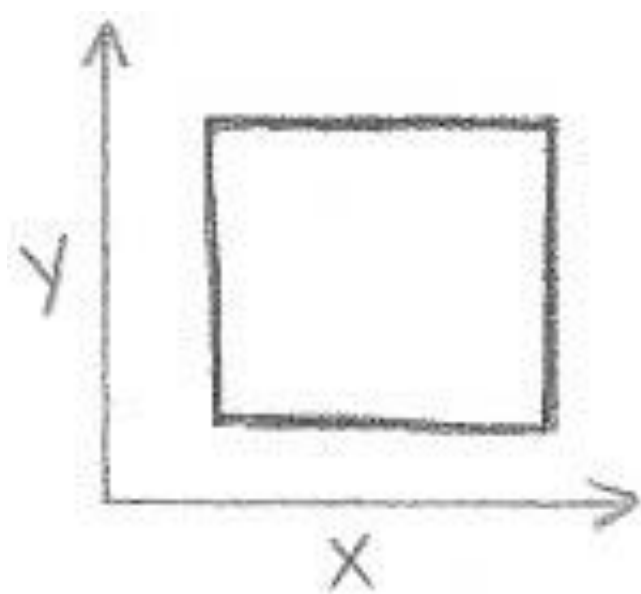
CONNECT



SHADE



RAPID FIRE



RAPID FIRE